

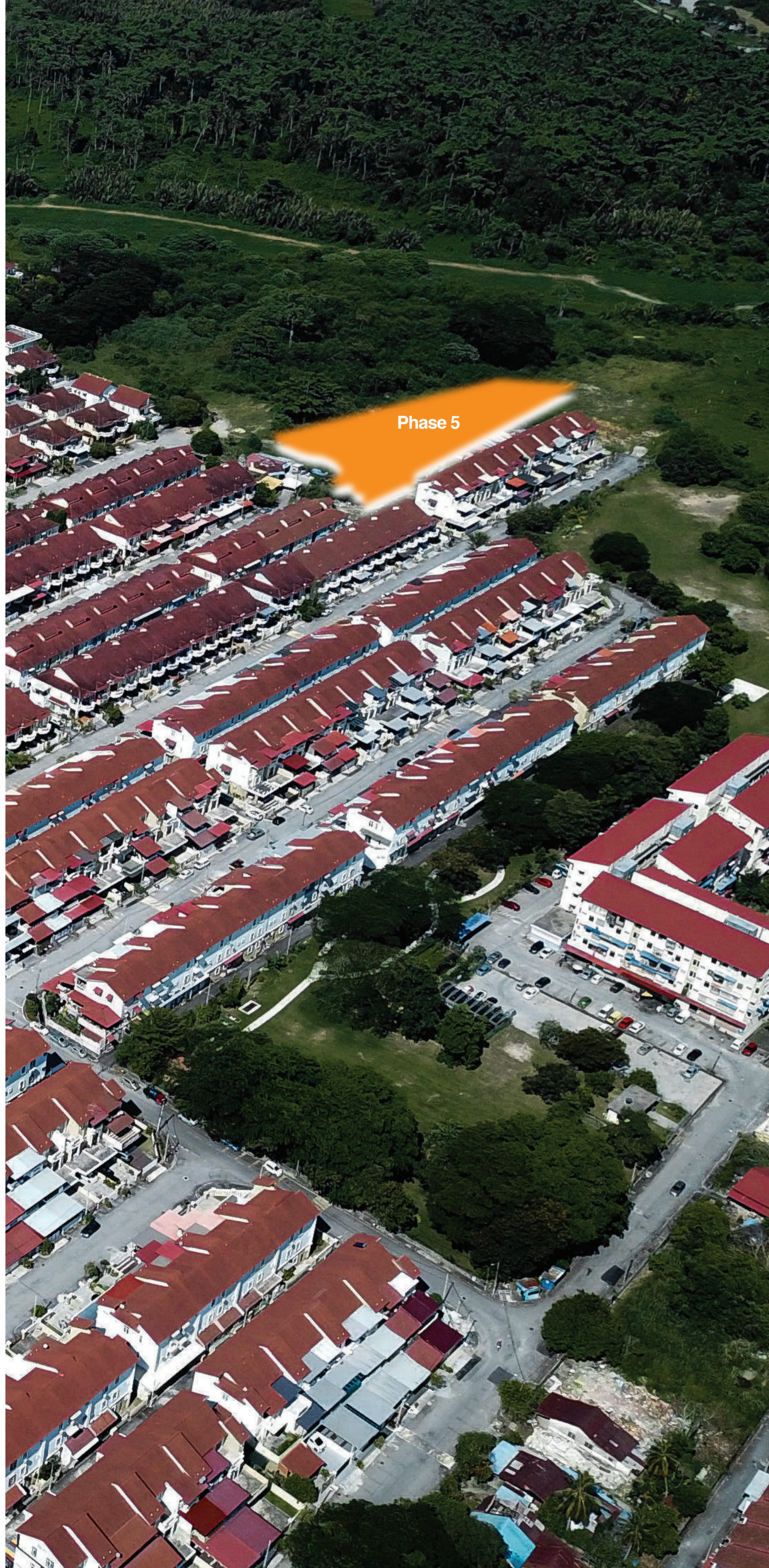
FREEHOLD



# Taman Merbau Indah

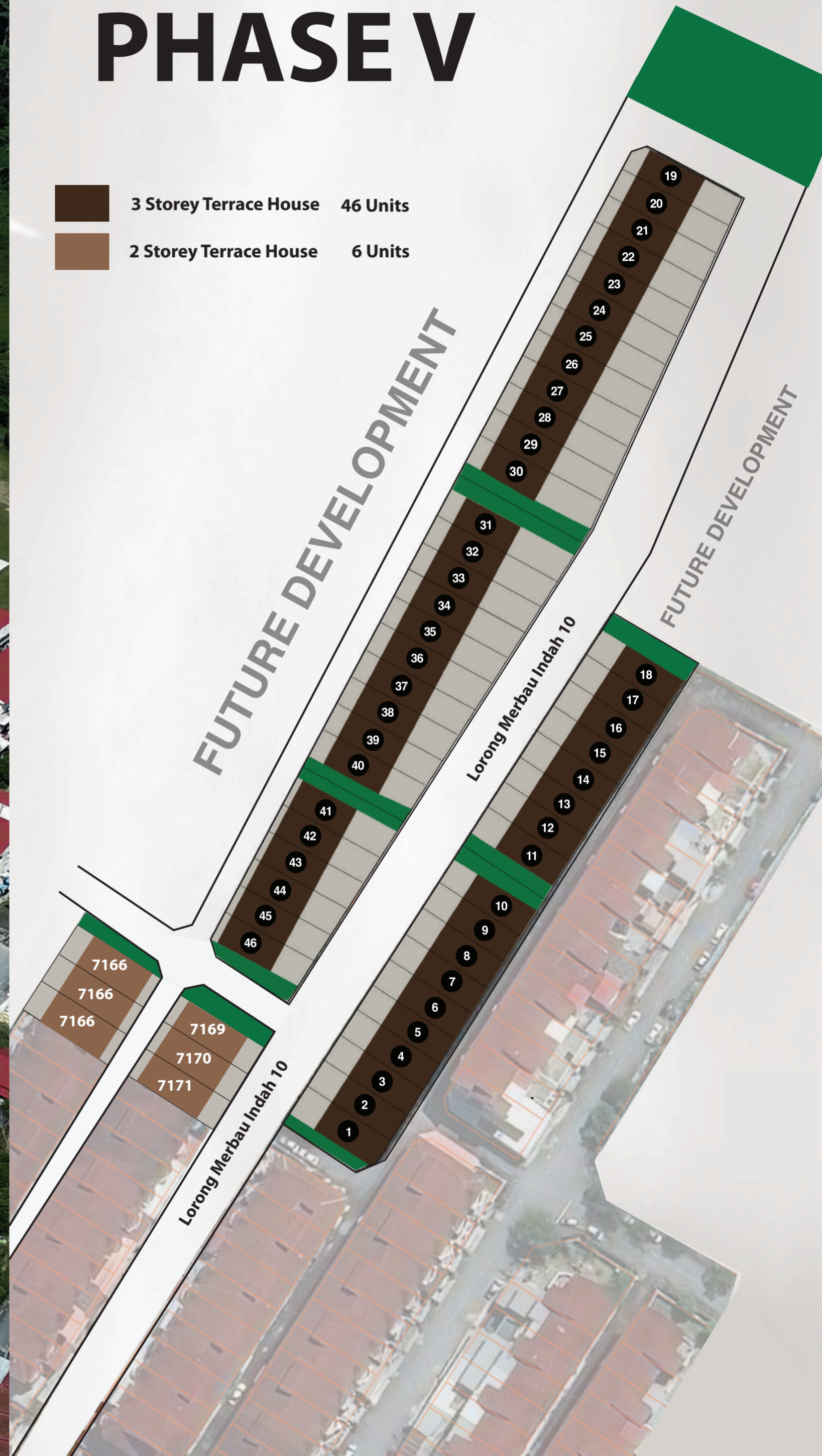




# TAMAN MERBAU INDAH PHASE V



-  3 Storey Terrace House 46 Units
-  2 Storey Terrace House 6 Units



# 3 STOREY TERRACE HOUSE

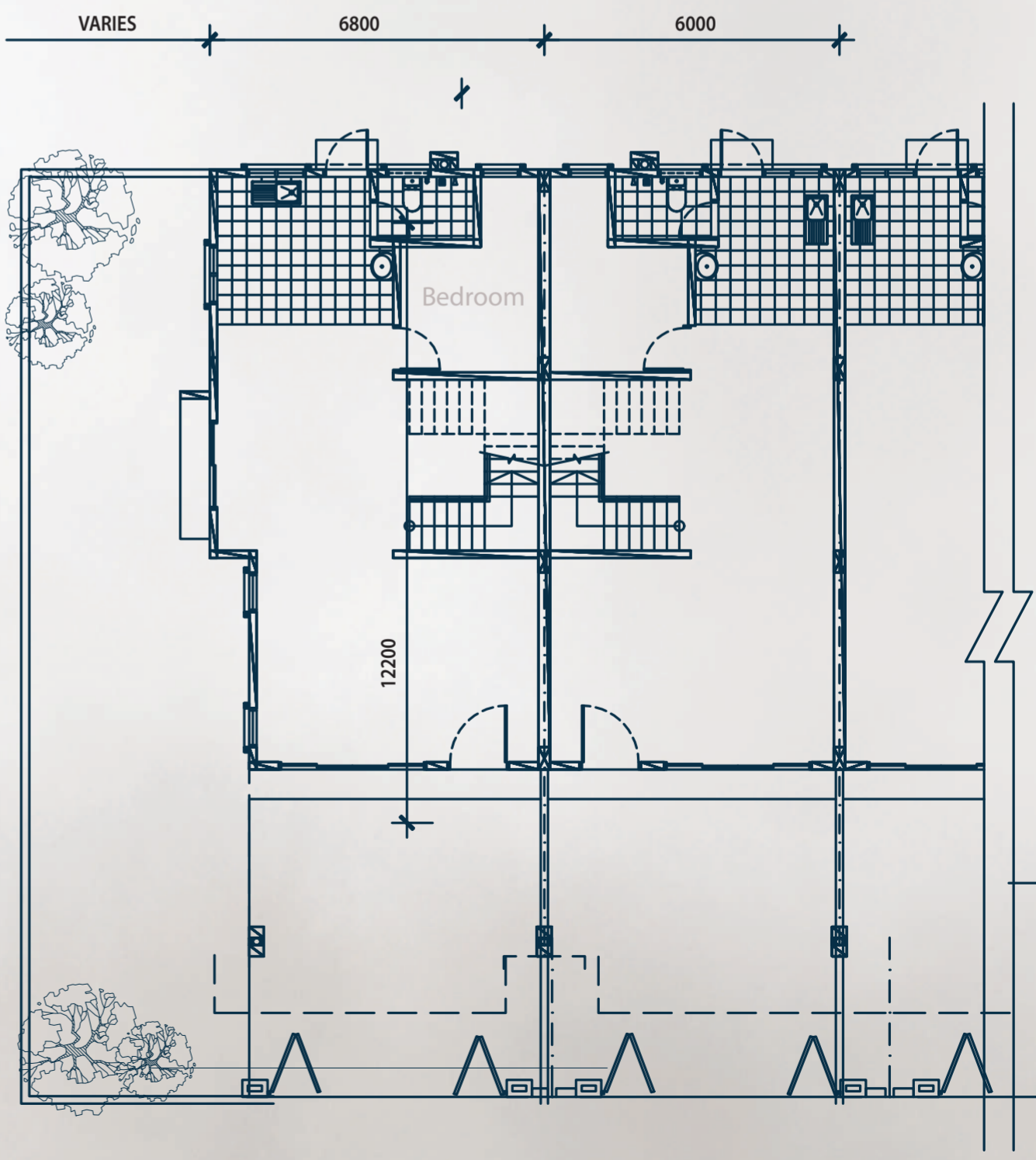
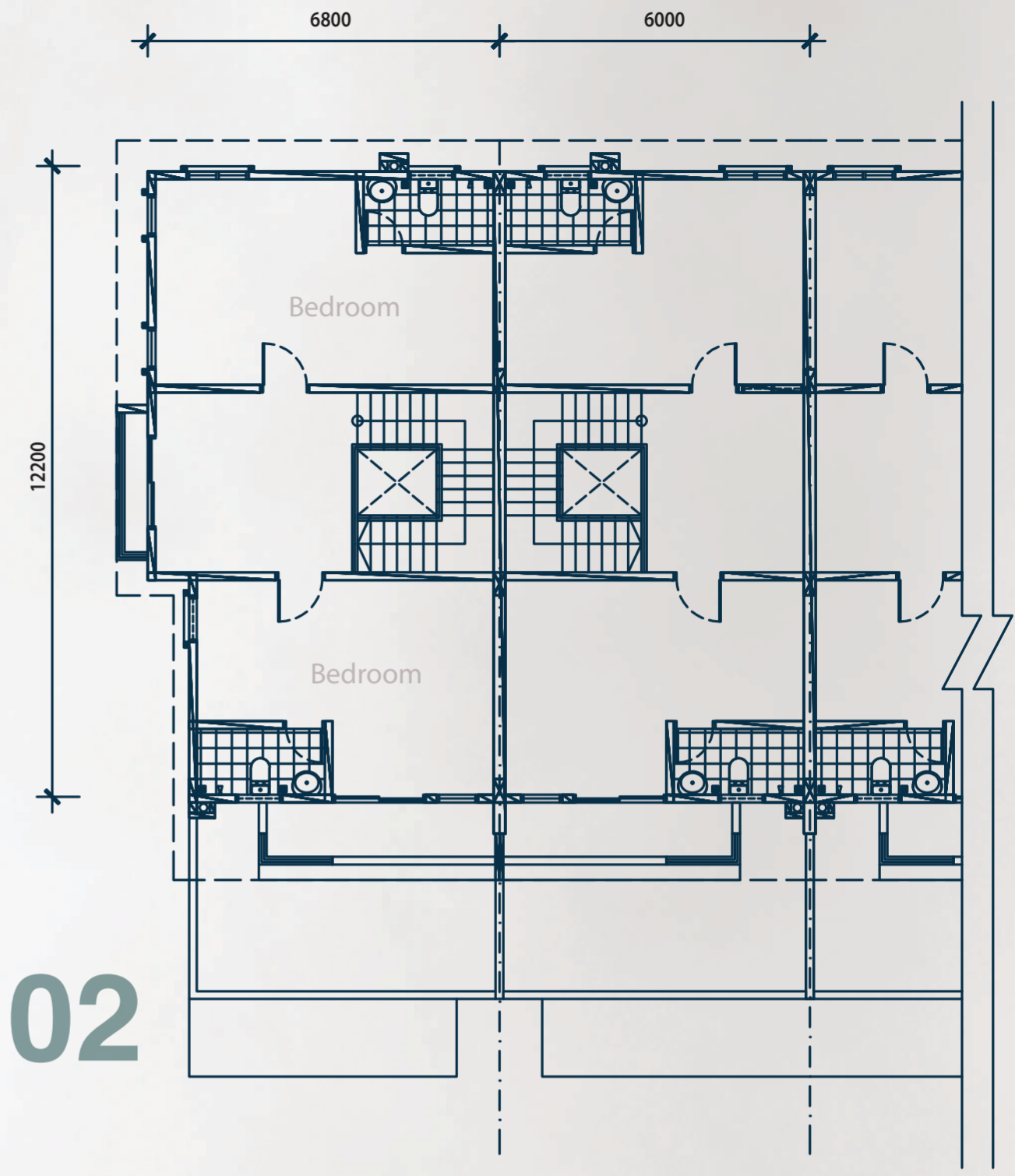
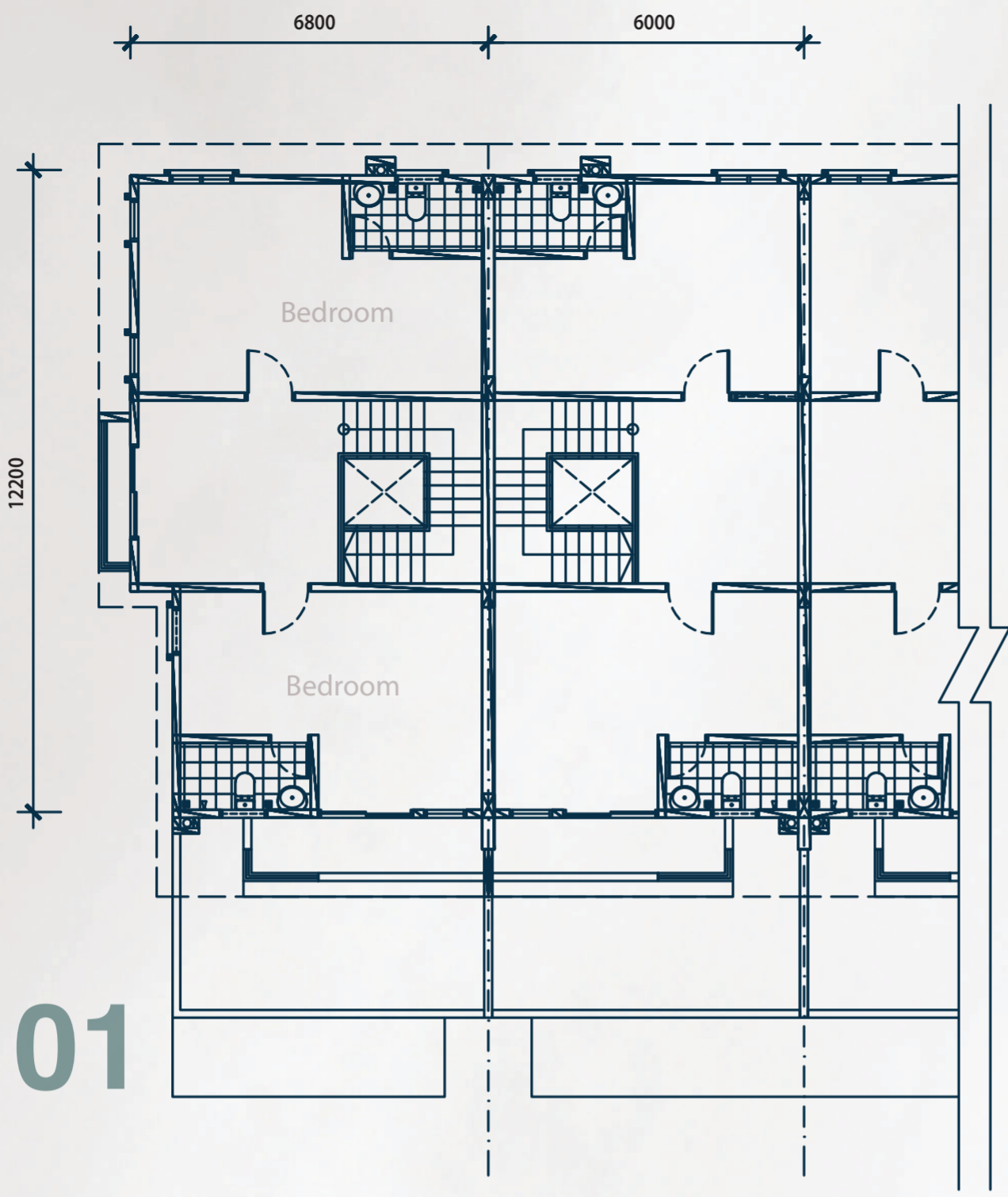
Land Area 20' x 62' / 1,227 sqft onwards

Build Up Area 20' x 40' / 2,400 sqft onwards

5 Bedroom & 5 Bathroom

46 Units





# 2 STOREY TERRACE HOUSE

6 Units

Land Area 20' x 62' / 1,227 sqft onwards

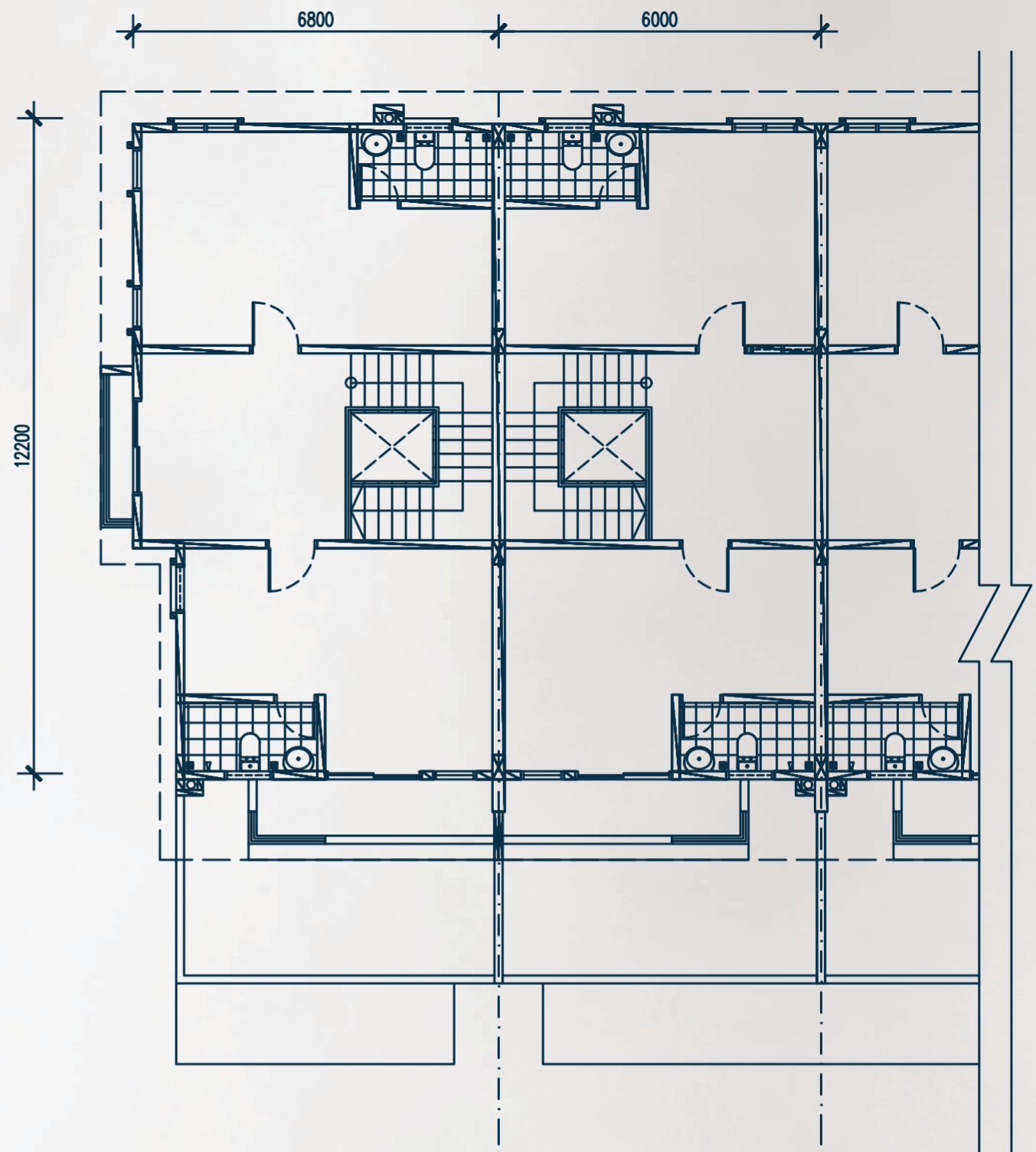
Build Up Area 20' x 40' / 1,600 sqft onwards

4 Bedroom & 3 Bathroom

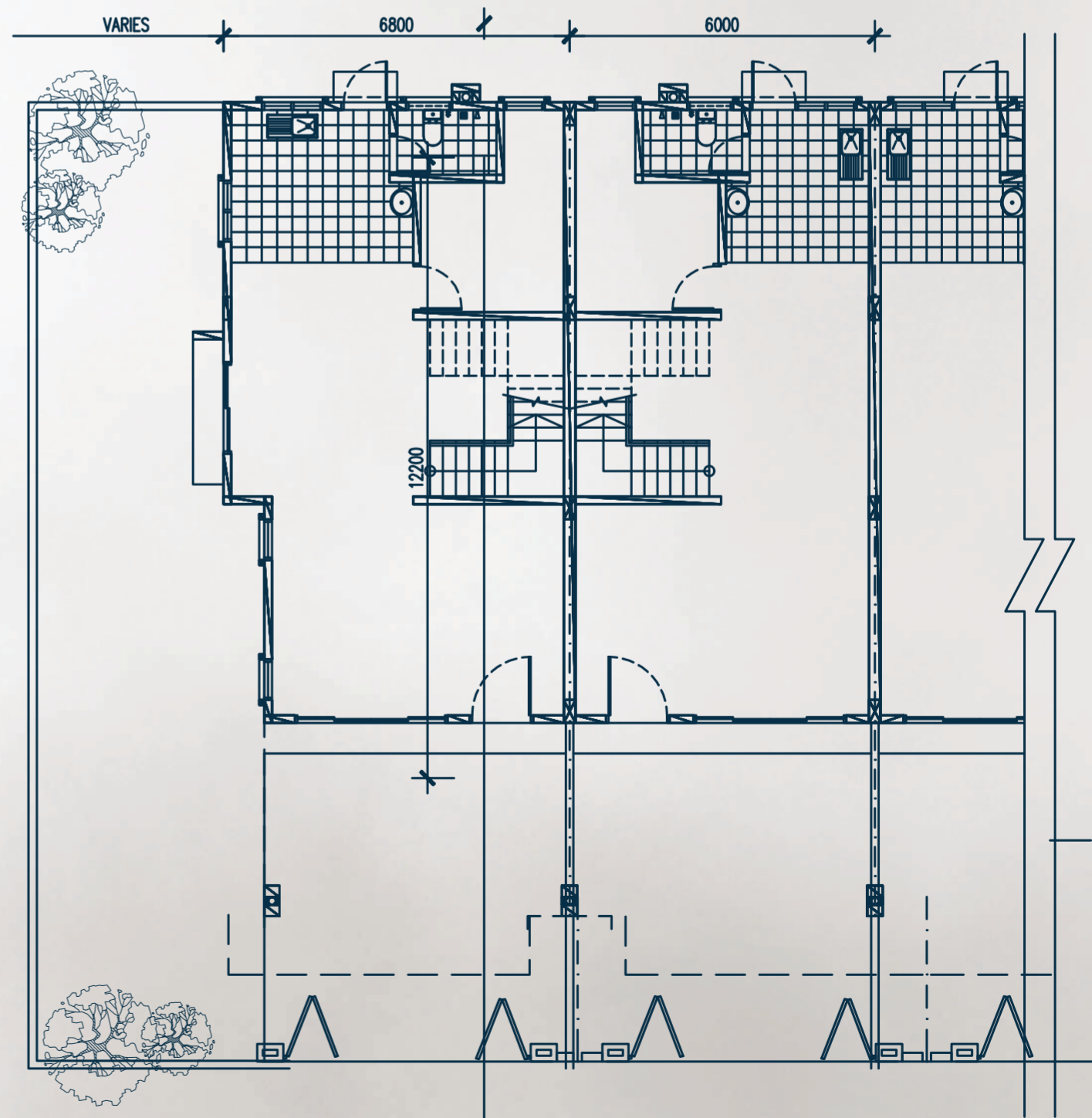


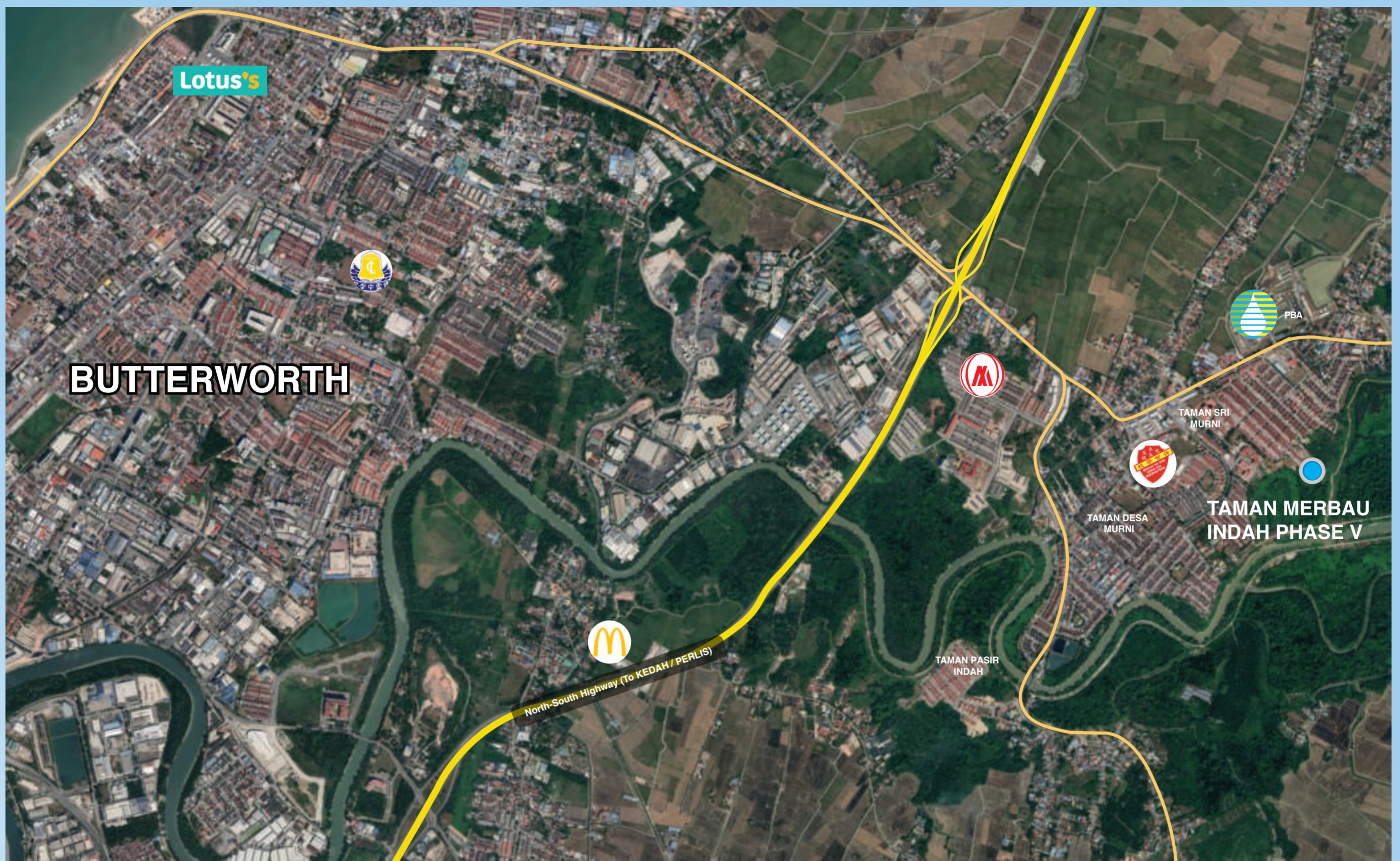


01



G





SJK@ KAI CHEE



SMK CHUNG LING



NORTH-SOUTH HIGHWAY



POST OFFICE & POLICE STATION



大东方发展有限公司

Ocean Mix Sdn. Bhd.

1146, Mukim 16, Kampung Teluk Sungai  
Dua, 13800 Butterworth

☎ 04 - 3565860, 012- 430 2619

🌐 [www.orientalmax.com.my](http://www.orientalmax.com.my)

✉ [enquiry@orientalmax.com.my](mailto:enquiry@orientalmax.com.my)

Whist every reasonable care has been taken in providing the information contained herein the developer does not make any representation or warranty thereof and cannot be held responsible for any accuracies howsoever arising. The information contained herein is subjected to change without notification as may required by the relevant authorities of the developers architect and cannot for part of an offer or contract. All pictures and illustrations are artist' impression only.

\*\*All final measurements of the drawings are to be finalised in the sales and purchase contract.

FOR INTERNAL CIRCULATION ONLY